



Case Study

Northacre Resource Recycling Centre, Westbury, Wiltshire

Background

Cole Easdon Consultants carried out the detailed design of the external works and drainage at the Northacre Resource Recycling Centre in Westbury, Wiltshire.

Client

Interserve Project Services Ltd

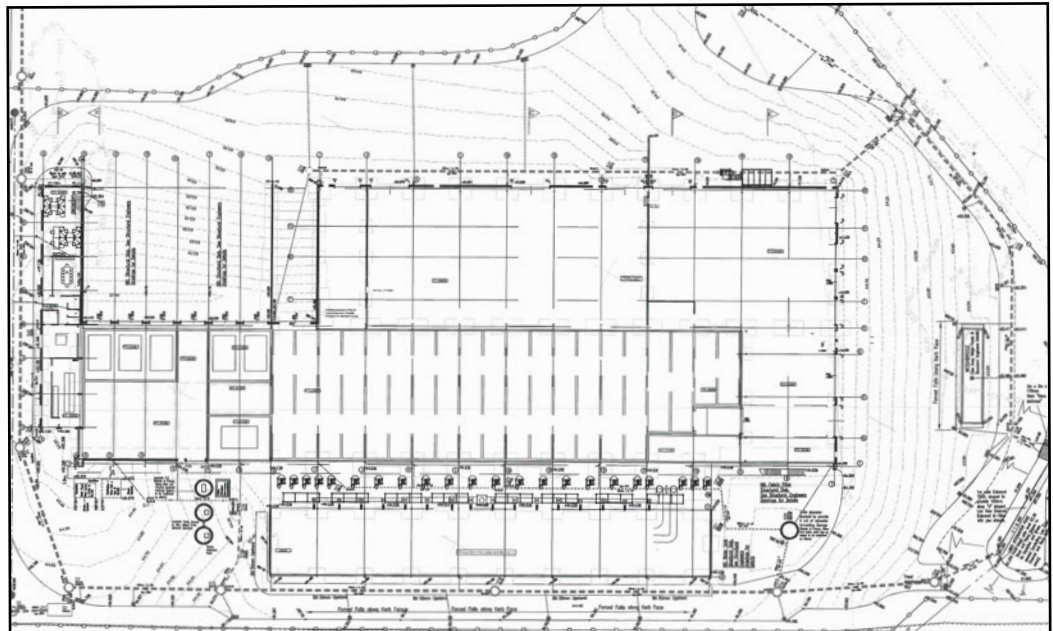
CEC Input

- Detailed design of external pavements and site access junction.
- Detailed design of storm and foul water systems including attenuation pond.
- Detailed design of leachate drainage.

The resource recycling centre is to receive household refuse from the Wiltshire Council area. This cutting edge process converts the refuse material into fuel pellets for use in power generation facilities.

Benefits of Our Involvement

- As part of the multi-disciplined design team, CEC provided cost-effective design solutions to the appropriate standards in a timely manner, and to suit the client's construction programme.



Layout Plan

Bristol Office
160 Aztec, Aztec West
Almondsbury
Bristol
BS32 4TU
Tel: 01454 800 474
Email: br@ColeEasdon.com

COLE EASDON CONSULTANTS

CIVIL ENGINEERING ~ HIGHWAYS
TRANSPORTATION ~ FLOOD RISK
BRISTOL & SWINDON

Swindon Office (Head Office)
Unit 2, York House
Edison Park, Dorcan Way
Swindon, Wiltshire
SN3 3RB
Tel: 01793 619 965
Email: sn@ColeEasdon.com

www.ColeEasdon.com

Photograph is the property of Cole Easdon Consultants